



# SERVICE FOR THE LORD'S DAY

IDLEWILD PRESBYTERIAN CHURCH  
PALM SUNDAY  
MARCH 29, 2026 | 8:30 AND 11:00 A.M.

**Bold text is read  
by the congregation.**

**\*Asterisk indicates when to  
rise in body or in spirit.**

**Please sign the friendship pad  
so we may take note of your  
presence and you may greet  
your neighbors by name.**



**Hymn No. 196:** These stanzas for Palm Sunday have been selected and translated from a much longer Latin poem written by a bishop who was the leading theologian in Charlemagne's court. They are sung to a 17th-century German chorale, as adapted for these words in the mid-19th century.

## GATHER IN GOD'S NAME

**PRELUDE** (8:30)  
(11:00)

*HOSANNA, LOUD HOSANNA!*  
*TE DEUM*

ELLACOMBE; ARR. OVID YOUNG  
MARC-ANTOINE CHARPENTIER

ROWAN ANTHONY, TRUMPET SOLOIST

**\*CALL TO WORSHIP**

THE REVEREND MARY NEWBERG GALE

Blessed is the One who comes in the name of the Lord.

**Hosanna in the highest!**

Christ comes to us in humility, riding not in power, but in peace.

**We welcome the One who meets us in love.**

Christ gathers us into a community of grace

**where burdens are shared and compassion is lived.**

We are called to follow this King, not only with our words,

**but with lives shaped by mercy and generosity.**

Let us worship the One who comes among us,

**with praise on our lips and compassion in our hearts.**

**\*HYMN OF CELEBRATION NO. 196**

*ALL GLORY, LAUD, AND HONOR*

VALET WILL ICH DIR GEBEN

## All Glory, Laud, and Honor 196

*Refrain*

All glo - ry, laud, and hon - or to thee, Re-deem-er, King,

to whom the lips of chil - dren made sweet ho-san-nas ring!

1 Thou art the King of Is - ra - el, thou Da - vid's roy - al Son,  
 2 The peo - ple of the He - brews with palms be - fore thee went;  
 3 To thee, be - fore thy pas - sion, they sang their hymns of praise;  
 4 Thou didst ac - cept their prais - es; ac - cept the prayers we bring,

who in the Lord's name com - est, the King and bless - ed One.  
 our praise and prayers and an - thems be - fore thee we pre - sent.  
 to thee, now high ex - alt - ed, our mel - o - dy we raise.  
 who in all good de - light - est, thou good and gra-cious King!

These stanzas for Palm Sunday have been selected and translated from a much longer Latin poem written by a bishop who was the leading theologian in Charlemagne's court. They are sung to a 17th-century German chorale, as adapted for these words in the mid-19th century.



## \*PRAYER OF CONFESSION

THE REVEREND DAVID J. POWERS

Merciful God,  
you have given us all that we need,  
yet we live as though there is never enough.

**We hold tightly to what we have.  
We overlook the needs of others.  
We turn away from opportunities to share your love.**

Christ calls us into lives of generous compassion,  
yet we hesitate to follow where he leads.

**We grow comfortable with what is ours.  
We forget that we belong to one another.  
We fail to trust that you will provide.**

Gracious God,  
forgive us and renew us.

**Open our hands to give freely.  
Open our hearts to care deeply.  
Form us into a community shaped by your compassion.**

*(Silent Confession)*



## \*RESPONSE NO. 575

*LORD, HAVE MERCY UPON US*

KYRIE ELEISON

Lord, have mer - cy up - on us; Christ, have mer - cy up -  
on us; Lord, have mer - cy up - on us.



## \*ASSURANCE OF PARDON

REV. POWERS

## \*RESPONSE NO. 581

*GLORY BE TO THE FATHER*

GLORIA PATRI

Glo - ry be to the Fa - ther, and to the  
Son, and to the Ho - ly Ghost; as it was in the be -  
gin - ning, is now, and ev - er shall be,  
world with - out end. A - men, a - men.

*Passing of the Peace* is one of the most ancient responses in worship. We invite you to share a sign of peace with your neighbor.



As children come forward during the gathering hymn, you are invited to pass your quarters to the center aisle for the children to collect for their offering. Quarters are sent to the Dougbe Presbyterian River School in Liberia.



At this time, three-year-olds to kindergarteners are welcome to proceed to Worship and Wonder with an adult.

**\*PASSING OF THE PEACE** (8:30)  
(11:00)

REV. POWERS  
VIVIAN HANSMEYER

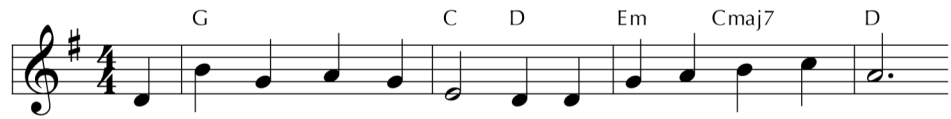
The peace of Christ be with you.

And also with you!

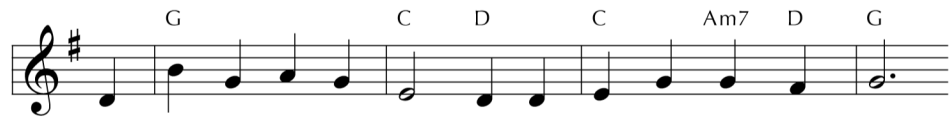
**HYMN OF GATHERING NO. 402** (11:00)

MERLE'S TUNE

HOW LOVELY, LORD



1 How love - ly, Lord, how love - ly is your a - bid - ing place;  
2 In your blest courts to wor - ship, O God, a sin - gle day  
3 A sun and shield for - ev - er are you, O Lord Most High;



my soul is long - ing, faint - ing, to feast up - on your grace.  
is bet - ter than a thou - sand if I from you should stray.  
you show - er us with bless - ings; no good will you de - ny.



The spar - row finds a shel - ter, a place to build her nest;  
I'd rath - er keep the en - trance and claim you as my Lord  
The saints, your grace re - ceiv - ing, from strength to strength shall go,



and so your tem - ple calls us with - in its walls to rest.  
than rev - el in the rich - es the ways of sin af - ford.  
and from their life shall riv - ers of bless - ing o - ver - flow.

**TIME WITH THE YOUNGER CHURCH** (11:00)

WHITNEY GETMAN

**THE LORD'S PRAYER**

Our Father who art in heaven, hallowed be thy name.  
Thy kingdom come, thy will be done on earth, as it is in heaven.  
Give us this day our daily bread.  
And forgive us our debts, as we forgive our debtors.  
And lead us not into temptation, but deliver us from evil:  
For thine is the kingdom, and the power,  
and the glory, forever. Amen.

**SHARING THE LIFE AND MINISTRIES OF THE CHURCH**

REV. POWERS

# PROCLAIM GOD'S WORD

PRAYER FOR ILLUMINATION

REV. POWERS

NEW TESTAMENT LESSON PHILIPPIANS 4:10-20

SERMON MARKS OF A DISCIPLE - COMPASSION

SILENT REFLECTION

## RESPOND TO GOD'S WORD

\*AFFIRMATION OF FAITH (8:30)  
(11:00)

REV. GALE  
SAGE SCOTT-JAMISON

We believe that our lives are held within the encircling love of God,  
who knows our names and recognizes our deepest needs.

**We believe that Christ is the divine Child of the living God,  
and that his grace is like living waters  
that can never be exhausted.**

We believe in the birthing, renewing, enabling Spirit of God  
who yearns over our welfare as a mother yearns for her child.

**We believe that God is in the arid desert  
as well as in green pastures,  
and that hard times and disciplines are also loving gifts.**

We believe that our journey has a purpose and a destination,  
and that our path leads to a glory we cannot yet imagine.

**We believe that in the church we are fellow pilgrims on the road,  
and that we are called to love one another as God loves us.  
This is our faith and we are humbled to profess it  
in Jesus the Christ. Amen.**

RECEPTION OF NEW MEMBERS (11:00)

REV. POWERS AND REV. GALE

PRAYERS OF GOD'S PEOPLE (11:00)

REV. GALE

OFFERING OUR GIFTS & TITHES (8:30)  
(11:00)

REV. GALE  
SAGE SCOTT-JAMISON



*Found on page 199 of the New Testament in your pew Bible.*



*Today's Affirmation of Faith is from Patmos Abbey, Order of St. Columba, in Australia.*





During this time, we invite you to continue your support of the church and her mission. Online giving is available through Realm or through the mail. Those in the sanctuary may place their offering in the plate as it is passed.



**Hymn No. 197:** The opening two stanzas narrate the first Palm Sunday in the past tense, but the third stanza shifts to the present tense to emphasize what current singers do and believe. The repeated elements in this anonymous German tune suggest the repetitive patterns in a crowd's chant.

**OFFERTORY (8:30)**  
(11:00)

*THE PALMS*  
*HOSANNA, HOSANNA!*  
THE CHANCEL CHOIR

JEAN-BAPTISTE FAURE  
MITCHELL COVINGTON

Hosanna, Hosanna! Hosanna to the King! Hosanna!  
Let sweet Hosannas ring! Blessed is He who comes in the name of the Lord!  
Hosanna, Hosanna, the little children sang, through pillared court and temple,  
the lovely anthem rang. To Jesus, who had blessed them close folded to his breast,  
the children sang their praises, the simplest and the best. From Olivet they followed mid  
an exultant crowd, the victor palm branch waving, and chanting clear and loud.  
The Lord of earth and heaven rode on in lowly state, nor scorned that little children  
should on his bidding wait. "Hosanna in the highest!" that ancient song we sing,  
for Christ is our Redeemer, the Lord of heaven, our King. O may we ever praise him  
with heart and life and voice, and in his blissful presence eternally rejoice! Hosanna!

**\*RESPONSE** *PRAISE GOD, FROM WHOM ALL BLESSINGS FLOW* LASST UNS ERFREUEN

Praise God, from whom all bless - ings flow. Praise Christ all crea - tures  
here be - low Al - le - lu - ia, al - le - lu - ia! Praise  
Ho - ly Spi - rit ev - er - more Praise Tri - une God whom we a -  
dore Al - le - lu - ia, al - le - lu - ia! Al - le -  
lu - ia, al - le - lu - ia, al - le - lu - ia!

**\*PRAYER OF DEDICATION (8:30)**  
(11:00)

REV. GALE  
SAGE SCOTT-JAMISON

**THE SACRAMENT OF COMMUNION (8:30)**

REV. POWERS AND REV. GALE

## SEND IN GOD'S SPIRIT

**\*HYMN OF SENDING No. 197**

ELLACOMBE

*HOSANNA, LOUD HOSANNA*

**\*CHARGE AND BENEDICTION**

REV. POWERS

**POSTLUDE**

*TRUMPET VOLUNTARY*

JOHN STANLEY

## 197 Hosanna, Loud Hosanna

1 Ho - san - na, loud ho - san - na, the lit - tle chil - dren sang;  
 2 From Ol - i - vet they fol - lowed 'mid an ex - ult - ant crowd,  
 3 "Ho - san - na in the high - est!" That an - cient song we sing,

through pil - lared court and tem - ple the joy - ful an - them rang.  
 the vic - tor palm branch wav - ing, and chant - ing clear and loud;  
 for Christ is our Re - deem - er; the Lord of heaven, our King.

To Je - sus, who had blessed them, close fold - ed to his breast,  
 the Lord of earth and heav - en rode on in low - ly state,  
 O may we ev - er praise him with heart and life and voice,

the chil - dren sang their prais - es, the sim - plest and the best.  
 nor scorned that lit - tle chil - dren should on his bid - ding wait.  
 and in his bliss - ful pres - ence e - ter - nal - ly re - joyce.

The opening two stanzas narrate the first Palm Sunday in the past tense, but the third stanza shifts to the present tense to emphasize what current singers do and believe. The repeated elements in this anonymous German tune suggest the repetitive patterns in a crowd's chant.

## WELCOME NOTICES

**Welcome to Idlewild!** We are glad to have you join us for worship. If you are new to Idlewild, it is our prayer that you will experience the presence of God while you are here. At Idlewild, it is our hope that all who enter find a home.

**Children are always welcome in worship.** In addition, childcare for children newborns—3 years is available in the Jones Building in Room 153. Children of all ages are invited to pick up a worship packet in the main hallway that can be utilized to enhance their worship experience. During the sanctuary service there is a special *Time with the Younger Church*. After, children ages 3 years— kindergarten may go to *Worship and Wonder* on the third floor of the Jones building. **If you would like your child to attend *Worship and Wonder*, registration is required** once each semester by scanning the QR code. Parents pick-up children from *Worship and Wonder* following the conclusion of worship.

**New members are received by the Session.** If you are seeking a church home, we invite you to join the Idlewild family. Connect with a Pastor after worship.

**Prayer requests** are prayed daily by the Community Prayer Ministry Team and the Confidential Prayer Partners. If your prayers are confidential, you may call (901-487-6062) or submit them by email to [confidentialprayers@idlewildchurch.org](mailto:confidentialprayers@idlewildchurch.org). Otherwise, you can fill out a Community Prayer Request card in the pew rack and place it in the offering plate or submit them by email to [communityprayer@idlewildchurch.org](mailto:communityprayer@idlewildchurch.org).

**If you have a hospitalization, or pastoral care need,** please call or text (901) 654-6872. The Pastor on Call will respond as soon as possible. You can also email [pastor@idlewildchurch.org](mailto:pastor@idlewildchurch.org).

## WORSHIP NOTICES

**We welcome Rowan Anthony** as our guest trumpeter this morning. Our guest musicians are made possible by The Cannon Trust for Music at Idlewild Presbyterian Church.

**The cantors in this morning's Chapel service** are Marianne Gebb, Peggy McClure, Joe Lackie and Bill Burtch.

**The sanctuary flowers** are given to the glory of God and in memory of Clare Stallings from her family, Dana & Ray Brandon, Jim Levernier, Ellen Webb, Paul & Lori Stallings.

**Sanctuary flowers** are given in honor, celebration, or in appreciation of those we love. We appreciate your generosity in providing flowers to adorn our sanctuary for Sunday services. Make a donation at [idlewildchurch.org/flower-dedication](http://idlewildchurch.org/flower-dedication).

**The 11:00 service** is live at [youtube.com/@idlewild.church/streams](https://youtube.com/@idlewild.church/streams). As always, worship is available by way of the radio on AM560, 96.1FM, or 98.5FM. **Music is printed** under Onelicense.net **A-702280**.



# HOLY WEEK

Idlewild Presbyterian Church | 1750 Union Ave

**PALM SUNDAY**  
March 29 | 8:30 & 11 am

**GOOD FRIDAY**  
April 3 | 7 pm

**MAUNDY THURSDAY**  
April 2 | 7 pm

**EASTER SUNDAY**  
April 5 | 8:30 & 11 am

# ◆ *this week in print* ◆

## Church-Wide

**Sunday School Sabbath on Easter** (April 5): Adult, Children, and Youth Formation classes will take a sabbath next Sunday as we celebrate the Resurrection.

## Adult Ministry

**Caregivers Support Group** (Tuesday, April 7, Parlor, 5 pm): Are you a primary caregiver or know someone who is providing care to loved ones and family? The Caregivers support group, gathers monthly to learn more about resources available and provide support and community. To learn more, contact Jenny Nevels at (901) 268-4690.

**The Art of Reading** (Tuesdays 2:00 - 3:30, Room 301): March 31 - *Christy* by Catherine Marshall - chapters 17 - 22. Enjoy your reading and come join the discussion!

**Holy Week Labryinth Opportunity** (TK Young Room): During Holy Week, our Labryinth will be open each day for walking, contemplation, and prayer. In addition, on Tuesday and Thursday from 11-1, AB Thomas will be available to guide and frame a labyrinth walk.

## Presbyterian Women Circles Meet

IdleWILD Women will meet Tuesday, April 7 at 28 S Evergreen at 7 pm.

Abigail will meet Tuesday, April 7 at Katie Cole's home, 1464 Goodbar Ave., at noon.

Rebekah will meet Tuesday, April 7 at Joyce Webber's home, 6812 Stout Rd., at 10 am.

Lydia Ruth will meet Tuesday, April 7 in the Church Resource Room at 10:30 am.

Mary Magdalene will meet Tuesday, April 14 in the Church parlor at noon.

## Children's Ministry

**Easter Egg Hunt:** (TODAY, 3pm, Meet in the Gym): Bring your basket and meet us in the gym at 3 pm!

## Youth Ministry

**Glow Crazy Egg Hunt** (5:30 - 7:30 pm): Soon-to-be middle schoolers are invited to a special Glow Crazy Easter Egg Hunt during Youth Group tonight!

**Summer Youth Trips:** Contact Sage with any questions, or sign up at the QR code below.

**Charleston Partnership Trip** (June 7 - 13, Charleston, SC): We will learn about the area's rich history and the city's current situation, serve our neighbors, and reflect on God's call for justice and equity for all.

**Montreat Youth Conference** (July 18 - 26, Montreat, NC): Montreat Youth Conference is a transformative summer experience that invites young people to explore their faith, build authentic community, and discover their place in the life of the Church.

**Jones Scholarship Application** (Due May 1): This scholarship is thanks to a generous gift from our former senior minister and his wife, Paul T. and Anna H. Jones. To apply, write a letter describing your accomplishments/honors during your high school or college career, your involvement at church, and your plans for the coming school year. The deadline is May 1. Send your letter to [jonesscholarship@idlewildchurch.org](mailto:jonesscholarship@idlewildchurch.org).

## Outreach Ministry

**RITI and Care Closet Volunteer Appreciation Luncheon** (Sunday, April 12): We hope you will join us for our RITI and Care Closet Volunteer Appreciation Luncheon following the 11 o'clock service in Montgomery Hall! In order for our kitchen staff to prepare for lunch, please RSVP at the link below by April 6th. Following lunch, we will do some Spring Cleaning in the RITI sleeping room. Please stay and help if you are able!



Sign-ups and other relevant links can be found at [www.idlewildchurch.org/calendar](http://www.idlewildchurch.org/calendar).

# A Vision of Idlewild

Idlewild Presbyterian Church is a community in which ...

**J**esus Christ is the center;  
the mighty voice of God inspires us to love;  
the Spirit joyfully sustains and nurtures seekers of every age,  
stage, and circumstance.

**W**orship forms the core of community life;  
prayer binds our brokenness and connects us in Christ's love  
to God and to one another;  
music, poetry, and art flourish in gratitude to our Creator;  
the beauty of creation is treasured and preserved;  
all the members of the church are ministers.

**T**he focus is scripture and its meaning for today;  
faith is formed and spirits nourished through reflection,  
practice and shared learning;  
the wisdom of other faith traditions is respected;  
and a diverse membership enriches and unites us.

**J**ustice speaks loudly and peace is our aspiration;  
all voices are heard;  
recreation and play are a wellspring for fellowship,  
celebration, and growth;  
the love of God guides our minds and spirits,  
leading us to right action in our hearts, our homes,  
our community, our nation, and our world,

**A**nd all who enter find a home.

