



SERVICE FOR THE LORD'S DAY

IDLEWILD PRESBYTERIAN CHURCH
2ND SUNDAY OF ADVENT
DECEMBER 7, 2025 | 8:30 AND 11:00 A.M.

**Bold text is read
by the congregation.**

***Asterisk indicates when to
rise in body or in spirit.**

**Please sign the friendship
pad** so we may take note of
your presence and you may
greet your neighbors by
name.



Advent Liturgists
8:30 - Alesia & Shane
O'Connor
11:00 - Sarah & Ken Coward,
Kaya & Stax



Hymn No. 82: With its
opening "Come," this hymn
sounds the note of entreaty
and invitation that
characterizes the Advent
season (from the Latin
adventus = "coming"). Its
blending of memory and
hope helps us to give voice to
our present faith as we stand
between the past and the
future.

GATHER IN GOD'S NAME

PRELUDE (8:30) *FROM HEAVEN ABOVE TO EARTH I COME* JOHANN PACHELBEL
(11:00) *PEOPLE, LOOK EAST* ARR. CATHY MOKLEBUST
THE HANDBELL CHOIR; SONDRRA TUCKER, CONDUCTOR

CALL TO WORSHIP AND LIGHTING THE CANDLE OF PEACE

In the wilderness, a voice cries out:

Prepare the way of the Lord!

When the world seems dry and lifeless,

God is doing a new thing!

Streams flow in the desert; weary hearts find rest.

Let us worship the God of peace and renewal.

Today we light the candle of Peace,
remembering that Christ is the one who makes all things new.

**We light this candle to declare that peace is possible
because God is with us.**

PRAYER OF THE DAY

*HYMN OF CELEBRATION NO. 82

COME, THOU LONG-EXPECTED JESUS

HYFRYDOL



*PRAYER OF CONFESSION

BEN WILKINS

Creator of all things new,
we confess that we do not always trust your renewal.

We grow weary of waiting
and doubt that change is possible.

We overlook your quiet work among us,
and close our hearts to your surprising grace.

Forgive us, O God.

Open our eyes to the signs of your kingdom
and teach us again to rejoice in your advent.

(Silent Confession)



*RESPONSE NO. 95

PREPARE THE WAY OF THE LORD

PREPARE THE WAY



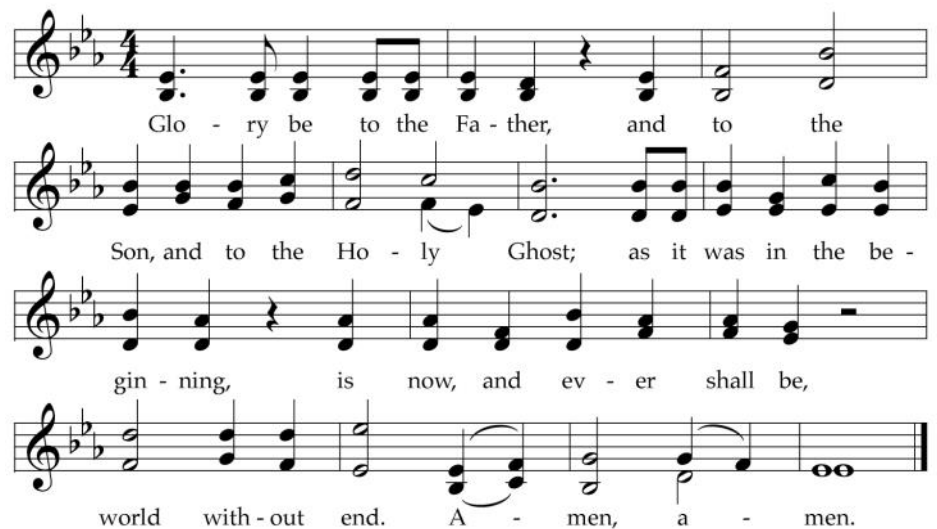
*ASSURANCE OF PARDON

BEN WILKINS

*RESPONSE NO. 581

GLORY BE TO THE FATHER

GLORIA PATRI



Passing of the Peace is one of the most ancient responses in worship. We invite you to share a sign of peace with your neighbor.

*PASSING OF THE PEACE (8:30)

(11:00)

BEN WILKINS

EMORY DRISKILL

The peace of Christ be with you.

And also with you!



As children come forward during the gathering hymn, you are invited to pass your quarters to the center aisle for the children to collect for their offering. Quarters are sent to the Dougbe Presbyterian River School in Liberia.

HYMN OF GATHERING NO. 401 (11:00)

GATHER US IN

HERE IN THIS PLACE



1 Here in this place the new light is stream-ing; now is the dark-ness
2 We are the young, our lives are a mys-tery. We are the old who
3 Here we will take the wine and the wa-ter; here we will take the
4 Not in the dark of build-ings con-fin-ing, not in some heav-en,



van-ished a-way; see in this space our fears and our dream-ings
yearn for your face. We have been sung through-out all of his-tory,
bread of new birth. Here you shall call your sons and your daugh-ters,
light years a-way: here in this place the new light is shin-ing;



brought here to you in the light of this day.
called to be light to the whole hu-man race.
call us a-new to be salt for the earth.
now is the king-dom, and now is the day.



Gath-er us in, the lost and for-sak-en; gath-er us in, the
Gath-er us in, the rich and the haugh-ty; gath-er us in, the
Give us to drink the wine of com-pas-sion; give us to eat the
Gath-er us in and hold us for-ev-er; gath-er us in and



blind and the lame; call to us now, and we shall a-wak-en;
proud and the strong; give us a heart, so meek and so low-ly;
bread that is you; nour-ish us well, and teach us to fash-ion
make us your own; gath-er us in, all peo-ples to-geth-er,



we shall a-rise at the sound of our name.
give us the cour-age to en-ter the song.
lives that are ho-ly and hearts that are true.
fire of love in our flesh and our bone.



At this time, three-year-olds to kindergarteners are welcome to proceed to Worship and Wonder with an adult.

TIME WITH THE YOUNGER CHURCH (11:00)

WHITNEY GETMAN

THE LORD'S PRAYER

SHARING THE LIFE AND MINISTRIES OF THE CHURCH

THE REVEREND DAVID J. POWERS



*Found on page 672 of the
Old Testament and 11 of the
New Testament in your pew
Bible.*



*Today's Affirmation of Faith
is from The Iona Community
Creed.*

PROCLAIM GOD'S WORD

PRAYER FOR ILLUMINATION

REV. POWERS

OLD TESTAMENT LESSON

ISAIAH 43:19-21

NEW TESTAMENT LESSON

MATTHEW 11:1-11

SERMON *INSISTING ON HOPE - STREAMS IN THE WASTELAND*

SILENT REFLECTION

RESPOND TO GOD'S WORD

*AFFIRMATION OF FAITH

THE REVEREND MARY NEWBERG GALE

We believe that God is present
in the darkness before dawn;

**in the waiting and uncertainty
where fear and courage join hands,**

conflict and caring link arms,
and the sun rises over barbed wire.

**We believe in a with-us God
who sits down in our midst
to share our humanity.**

We affirm a faith
that takes us beyond a safe place:
into action, into vulnerability,
and onto the streets.

**We commit ourselves to work for change
and put ourselves on the line;
to bear responsibility, take risks,
live powerfully,
and face humiliation;
to stand with those on the edge;
to choose life and be used by the Spirit
for God's new community of hope.**



During this time, we invite you to continue your support of the church and her mission. Online giving is available through Realm or through the mail. Those in the sanctuary may place their offering in the plate as it is passed.



OFFERING OUR GIFTS & TITHES

BEN WILKINS

OFFERTORY (8:30)
(11:00)

CHRISTMAS PROPHECY
O MAGNUM MYSTERIUM
THE CHANCEL CHOIR

BOB BURROUGHS
MORTON LAURIDSEN

*RESPONSE PRAISE GOD, FROM WHOM ALL BLESSINGS FLOW

LASST UNS ERFREUEN

Praise God, from whom all bless - ings flow. Praise Christ all crea - tures
here be - low Al - le - lu - ia, al - le - lu - ia! Praise
Ho - ly Spi - rit ev - er - more Praise Tri - une God whom we a -
dore Al - le - lu - ia, al - le - lu - ia! Al - le -
lu - ia, al - le - lu - ia, al - le - lu - ia!

*PRAYER OF DEDICATION

BEN WILKINS



During the Great Prayer of Thanksgiving - the congregation is invited to sing the bold text, beginning with "Holy, holy, holy." These responses can be found in the hymnal: Nos. 552, 553 and 554.



Hymn No. 837: The composer of the tune (and creator of the refrain) asked the author of the stanzas to write a hymn based on the latter part of Deuteronomy 33:27 (as worded in the King James Version): "Underneath are the everlasting arms." Their joint effort has proved very popular.

THE SACRAMENT OF COMMUNION

REV. POWERS AND REV. GALE

WORDS OF INVITATION

GREAT PRAYER OF THANKSGIVING

The Lord be with you.

And also with you.

Lift up your hearts.

We lift them to the Lord.

Let us give thanks to the Lord our God.

It is right to give our thanks and praise.



...who forever sing to the glory of your name:

Holy, holy, holy Lord,

God of power and might.

Heaven and earth are full of your glory.

Hosanna in the highest!

Blessed is He who comes in the name of the Lord.

Hosanna in the highest!



...great is the mystery of faith:

Christ has died.

Christ is risen.

Christ will come again.



...all glory and honor are yours, almighty God, now and forever.

Amen.

SHARING THE BREAD AND CUP

VOLUNTARY (11:00) LET ALL MORTAL FLESH KEEP SILENCE

ARR. JULIE TURNER

THE HANDBELL CHOIR

SEND IN GOD'S SPIRIT

***HYMN OF SENDING NO. 837**

SHOWALTER

WHAT A FELLOWSHIP, WHAT A JOY DIVINE

***CHARGE AND BENEDICTION**

REV. POWERS

POSTLUDE

VOM HIMMEL HOCH

JOHANN PACHELBEL

WELCOME NOTICES

Welcome to Idlewild! We are glad to have you join us for worship. If you are new to Idlewild, it is our prayer that you will experience the presence of God while you are here. At Idlewild, it is our hope that all who enter find a home.

Children are always welcome in worship. In addition, childcare for children newborns—3 years is available in the Jones Building in Room 153. Children of all ages are invited to pick up a worship packet in the main hallway that can be utilized to enhance their worship experience. During the sanctuary service there is a special Time with the Younger Church.



After, children ages 3 years— kindergarten may go to Worship and Wonder on the third floor of the Jones building. **If you would like your child to attend Worship and Wonder, registration is required** once each semester by scanning the QR code. Parents pick-up children from Worship and Wonder following the conclusion of worship.

New members are received by the Session. If you are seeking a church home, we invite you to join the Idlewild family. Connect with a Pastor after worship.

Prayer requests are prayed daily by the Community Prayer Ministry Team and the Confidential Prayer Partners. If your prayers are confidential, you may call (901-487-6062) or submit them by email to confidentialprayers@idlewildchurch.org. Otherwise, you can fill out a Community Prayer Request card in the pew rack and place it in the offering plate or submit them by email to communityprayer@idlewildchurch.org.

If you have a hospitalization, or pastoral care need, please call or text (901) 654-6872. The Pastor on Call will respond as soon as possible. You can also email pastor@idlewildchurch.org.

WORSHIP NOTICES

The bulletin art is *Hope Like a Dancer* by Lauren Wright Pittman, and inspired by Matthew 11:1-11. Artist statement:

In this image, John the Baptist sits in prison, letting the disciples' testimony settle in. People with impairments experience new senses and mobility. Those with skin diseases are cleansed. Those with little material comfort are offered hope, and the lungs of the dead are filled with the breath of life. I decided to image this good news through the dancing light of a lantern. I imagine John, even if for a moment, breaking into a bit of laughter at the magnitude of Jesus' ministry. Jesus was quite literally doing the unimaginable. He was not only healing physical ailments; perhaps more importantly, he was restoring people to community. As we know all too well, God's work isn't completed in Jesus' time. We are still woefully short of realizing the fullness of God's desire for all of creation, and the work is ours to see through. Until then, let us keep our eyes peeled for the glimmers of hope dancing all around us and work toward a day when all can join in that dance of wholeness.

Joe Lackie is the cantor in this morning's Chapel Service.

The sanctuary flowers are given today to the Glory of God in loving memory of Mr. and Mrs. A. VanCourt Pritchartt, Van Pritchartt, Jr., and Winnie Pritchartt Wellford by their family.

Our sanctuary Advent wreath is again decorated lightly to show Lewis Wellford's mid- 20th century craftsmanship. Symbols have always been part of a church's liturgy. Our sanctuary is absolutely full of symbols we refer to as Chrismons! On this second Sunday of Advent, we included a dove...Chrismon representing peace and the Holy Spirit. The greenery added is white pine...known as The Great Tree of Peace. We welcome you to the table where Peace is abundant for everyone.

Sanctuary flowers are given in honor, celebration, or in appreciation of those we love. We appreciate your generosity in providing flowers to adorn our sanctuary for Sunday services. If you are interested in donating, find the registration page at idlewildchurch.org/flower-dedication.

The 11:00 service is live at youtube.com/@idlewild.church/streams. As always, worship is available by way of the radio on AM560, 96.1FM, or 98.5FM. **Music is printed** under Onelicense.net **A-702280**.

♦ *this week in print* ♦

Church-Wide

Congregational Meeting (Sunday, December 14, at the conclusion of the sanctuary service): We will have meet to elect Deacons and Elders for the class of 2029.

Blue Christmas - Wholeness and Healing Service (Wednesday, December 10, 7 pm, Chapel): The holiday season can be particularly challenging for many of us. We carry anxiety, grief, worry, and other burdens - for ourselves, for others, and for the world. Our Blue Christmas Service offers a moment to pause amidst the chaos of the season, to center ourselves, to hear again the promises of our God. The time of prayer, scripture, and song provides a space to hold gently the heaviness of the season, and to offer our concerns to the Lord.

Poinsettia Orders (Due Wednesday, December 10): Poinsettia orders are made in honor or in memory of a loved one. This dedication will help us adorn our sanctuary as we head into the Christmas season. You can give online at idlewildchurch.org/flower-dedication or pick up a paper form in the hallway. The price this year is \$22, and orders are due December 10.

Adult Ministry

New Sunday School Offering - Disciples Bible Study Class: This winter and spring, we will study the New Testament. Come to the organizational meeting of this class during the Sunday School hour on January 4th in Room 305 to learn more. Anna Witte will serve as the class facilitator. For more information, reach out to Anna Witte or David Zanca.

Labyrinth Walk & SoulCollage Workshop (Saturday December 20): Both walking a labyrinth and creating and journaling with SoulCollage® cards are tools for meditative prayer. During this experiential mini workshop, led by Anne Bradley Thomas, you will experience a labyrinth walk, a quick overview of the SoulCollage® process, the opportunity to make one card, and a time for reflective journaling. SoulCollage® is a gentle, intuitive, and creative process and a powerful tool for ongoing self-reflection, self-awareness, and accessing your intuitive wisdom. The Labyrinth will be available for use from 9 - 12, and the workshop begins at 12:30.

Fellowship and Recreation

Open Mahjong Play: Sign up at idlewildchurch.org/fellowship-and-recreation.

Youth Ministry

Christmas Parties: High School Party on 12/7 at The Robertson's Home, Middle School on 12/14 at the Henson's home. Join us for Christmas Games, Food, and a White Elephant Gift Exchange!

Christmas Eve Youth-Led Service (December 24, 11 pm): Sign up to participate in the Youth-Led Christmas Eve Service at the link below or contact Sage or Jacque with questions.

Music Ministry

Festival of Christmas Concert - Our third annual Christmas concert will be Sunday, December 14 at 7:30 pm in the sanctuary. Join us for a festive holiday celebration, featuring the Idlewild Chancel Choir & Festival Orchestra.

Children's Ministry

Toy Drive (Sunday, December 14): We're collecting toys for the Refugee Empowerment Program again this year. Please bring new, unwrapped toys (\$25 or less) for all age groups, from babies to teens. Donations may be dropped off by December 14 in the collection boxes at the Jones Building front desk or in the sanctuary hallway. Thank you for helping share joy this season!

Christmas Eve Child-Led Service (December 24, 3 pm): Sign your child up to participate in the Child-Led Christmas Eve Service. All children, PreK through 5th grade, are invited to take part in leading this special worship service. We have something for all ages, speaking and non-speaking roles, and roles for those who would prefer to participate in the background. Sign up at the link below or contact Whitney Getman with questions.



Registrations, sign-ups, and other relevant links:
www.idlewildchurch.org/calendar.

A Vision of Idlewild

Idlewild Presbyterian Church is a community in which ...

Jesus Christ is the center;
the mighty voice of God inspires us to love;
the Spirit joyfully sustains and nurtures seekers of every age,
stage, and circumstance.

Worship forms the core of community life;
prayer binds our brokenness and connects us in Christ's love
to God and to one another;
music, poetry, and art flourish in gratitude to our Creator;
the beauty of creation is treasured and preserved;
all the members of the church are ministers.

The focus is scripture and its meaning for today;
faith is formed and spirits nourished through reflection,
practice and shared learning;
the wisdom of other faith traditions is respected;
and a diverse membership enriches and unites us.

Justice speaks loudly and peace is our aspiration;
all voices are heard;
recreation and play are a wellspring for fellowship,
celebration, and growth;
the love of God guides our minds and spirits,
leading us to right action in our hearts, our homes,
our community, our nation, and our world,

And all who enter find a home.



IDLEWILD PRESBYTERIAN CHURCH (USA)
www.idlewildchurch.org | 901-726-4681

