



## SERVICE FOR THE LORD'S DAY

IDLEWILD PRESBYTERIAN CHURCH  
SEVENTH SUNDAY AFTER PENTECOST  
JULY 27, 2025 | 10:00 A.M.

**Bold text is read  
by the congregation.**

**\*Asterisk indicates when to  
rise in body or in spirit.**

**Please sign the friendship  
pad** so we may take note of  
your presence and you may  
greet your neighbors by  
name.

**The Call to Worship** is based  
upon Psalm 121.



**Hymn No. 645:** The regal  
divine imagery here will not  
be new to most singers, but  
some may not expect the  
third stanza's image of God  
as mother. Yet it is part of  
God's self-description in  
Isaiah 66:13. This Bohemian  
Brethren tune resembles  
both Genevan psalm tunes  
and French folk songs.

## GATHER IN GOD'S NAME

PRELUDE

ALLEGRETTO MALINCOLICO  
NOAH LIVINGSTON, FLUTE

FRANCIS POULENC

**\*CALL TO WORSHIP**

THE REVEREND COURTNEY VEAZEY

We lift up our eyes to the mountains:  
from where will our help come?

**Our help is from the Lord,  
maker of heaven and earth.  
The Lord is our guard –  
the shade at our right hand.**

By day the sun does not strike us,  
nor the moon by night.

**The Lord guards us from all harm.  
The Lord guards our life.  
The Lord guards our going and our coming,  
now and forevermore.**

**\*HYMN OF CELEBRATION NO. 645**

MIT FREUDEN ZART

SING PRAISE TO GOD WHO REIGNS ABOVE

## 645 Sing Praise to God Who Reigns Above

1 Sing praise to God who reigns a - bove, the God of all  
 2 What God's al-might - y power has made God's gra - cious mer -  
 3 The Lord is nev - er far a - way, but, through all grief  
 4 Thus all my toil - some way a - long I sing a - loud

cre - a - tion, the God of power, the God of love,  
 cy keep - eth; by morn - ing glow or eve - ning shade  
 dis - tress - ing, an ev - er - pres - ent help and stay,  
 thy prais - es, that all may hear the grate - ful song

the God of our sal - va - tion. With  
 God's watch - ful eye ne'er sleep - eth. With -  
 our peace and joy and bless - ing, as  
 my voice un - wea - ried rais - es. Be

heal - ing balm my soul is filled, and ev - ery faith - less  
 in the king - dom of God's might, lo! all is just and  
 with a moth - er's ten - der hand God gent - ly leads the  
 joy - ful in the Lord, my heart; both soul and bod - y,

THANKSGIVING

mur-mur stilled:  
 all is right:  
 cho - sen band:  
 take your part:

to God all praise and glo - ry!



Silence is kept after each petition.

## \*PRAYER OF CONFESSION

THE REVEREND MARY NEWBERG GALE

For failing to love others as you have loved us...

God of grace, **forgive us.**

For wasting your gifts and hoarding our goods...

God of grace, **forgive us.**

For plundering the earth and abusing the planet...

God of grace, **forgive us.**

For fearing those who are strange to us

and ignoring those in need...

God of grace, **forgive us.**

For losing heart and abandoning hope...

God of grace, **forgive us.**

For all the ways we turn from you...

God of grace, **forgive us.**

We offer our prayers in the name

of the One who saves us,

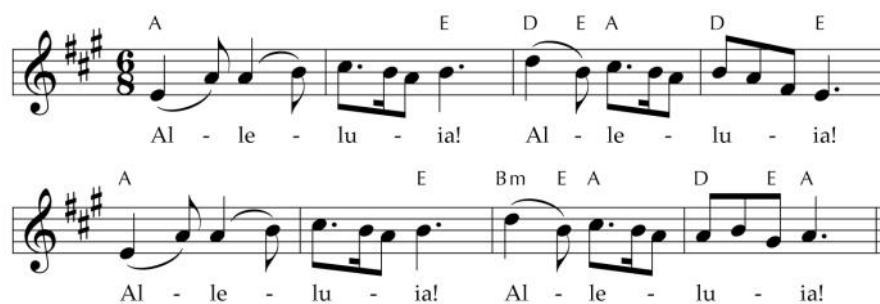
Jesus Christ.



## \*RESPONSE NO. 587

ALLELUIA

CELTIC ALLELUIA



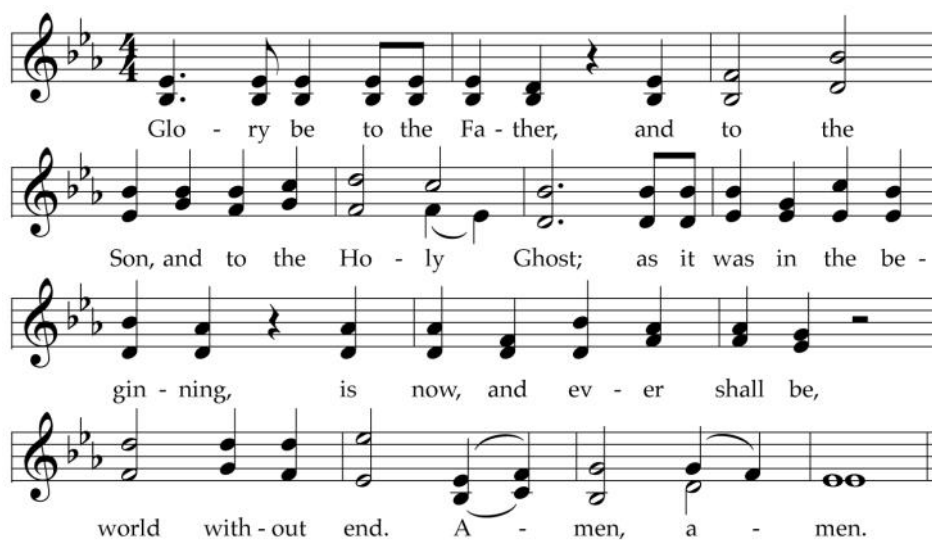
## \*ASSURANCE OF PARDON



## \*RESPONSE NO. 581

GLORY BE TO THE FATHER

GLORIA PATRI



*Passing of the Peace* is one of the most ancient responses in worship. We invite you to share a sign of peace with your neighbor.



*As children come forward during the gathering hymn, you are invited to pass your quarters to the center aisle for the children to collect for their offering. Quarters are sent to the Dougbe Presbyterian River School in Liberia.*



*At this time, three-year-olds to kindergarteners are welcome to proceed to Worship and Wonder with an adult.*

## \*PASSING OF THE PEACE

REV. GALE

The peace of Christ be with you.  
And also with you!

## HYMN OF GATHERING NO. 175

LAFFERTY

SEEK YE FIRST

1 Seek ye first the king - dom of God  
2 Ask, and it shall be giv - en un - to you;  
3 You shall not live by bread a - lone,

and its righ - teous - ness,  
seek, and you shall find;  
but by ev - ery word

and all these things shall be add - ed un - to you.  
knock, and the door shall be o - pened un - to you.  
that pro - ceeds from the mouth of God.

Al - le - lu, al - le - lu - ia!

## TIME WITH THE YOUNGER CHURCH

ANNA WHEELER

### THE LORD'S PRAYER

Our Father who art in heaven, hallowed be thy name.  
Thy kingdom come, thy will be done on earth, as it is in heaven.  
Give us this day our daily bread.  
And forgive us our debts, as we forgive our debtors.  
And lead us not into temptation, but deliver us from evil:  
For thine is the kingdom, and the power,  
and the glory, forever. Amen.

## SHARING THE LIFE AND MINISTRIES OF THE CHURCH

REV. VEAZEY



*Found on page 30 Of the Old Testament in your pew Bible.*



*Today's Affirmation of Faith is from the Iona Abbey Worship Book.*



# PROCLAIM GOD'S WORD

PRAYER FOR ILLUMINATION

REV. VEAZEY

SCRIPTURE LESSON      GENESIS 32:22-31

SERMON      *THE DAY IS BREAKING*

SILENT REFLECTION

## RESPOND TO GOD'S WORD

\*AFFIRMATION OF FAITH

REV. GALE

We believe and trust in God  
who has created and is creating,  
who has come in Jesus –  
the Word made flesh –  
to reconcile and make new,  
and who works in us and others  
by the power of the Spirit.

We are called to be the church:  
to celebrate God's presence,  
to live with respect for creation,  
to love and serve others,  
to seek justice and resist evil,  
to proclaim Jesus, crucified and risen,  
our judge and hope.

In life and death,  
in life beyond death,  
God is with us.  
We are not alone.  
Thanks be to God.

PRAYERS OF GOD'S PEOPLE

REV. GALE



During this time, we invite you to continue your support of the church and her mission. Online giving is available through Realm or through the mail. Those in the sanctuary may place their offering in the plate as it is passed.



**Hymn No. 314:** By blending biblical images and current vignettes in the present tense, this hymn connects Christ's promise that he is the Light of the world (John 8:12, 9:5) and his charge to his followers to be the light of the world (Matthew 5:14). This is part of the church's servant calling.

## OFFERING OUR GIFTS & TITHES

REV. VEAZEY

### OFFERTORY

THY PERFECT LOVE

K. LEE SCOTT

SUMMER CHOIR

Jesu, my love, my joy, my rest, Thy perfect love close in my breast  
that I Thee love and never rest; and make me love Thee of all things the best,  
and wound my heart in Thy love free, that I may reign in joy evermore with Thee.

Therefore be a reflection of God as dearly loved children;  
and lead a life of love, just as Christ has loved us and gave Himself for us.

### \*RESPONSE

PRAISE GOD, FROM WHOM ALL BLESSINGS FLOW

LASST UNS ERFREUEN



### \*PRAYER OF DEDICATION

REV. VEAZEY

## SEND IN GOD'S SPIRIT

### \*HYMN OF SENDING NO. 314

CHRIST, BE OUR LIGHT

LONGING FOR LIGHT, WE WAIT IN DARKNESS

### \*CHARGE AND BENEDICTION

REV. VEAZEY

### POSTLUDE

ALLEGRO

J. S. BACH

## WELCOME NOTICES

**Welcome to Idlewild!** We are glad to have you join us for worship. If you are new to Idlewild, it is our prayer that you will experience the presence of God while you are here. At Idlewild, it is our hope that all who enter find a home.

**Children are always welcome in worship.** In addition, childcare for children newborns—3 years is available in the Jones Building in Room 306. Children of all ages are invited to pick up a worship packet in the main hallway that can be utilized to enhance their worship experience. During the sanctuary service there is a special Time with the Younger Church.



After, children ages 3 years— kindergarten may go to Worship and Wonder on the third floor of the Jones building. **If you would like your child to attend Worship and Wonder, registration is required** once each semester by scanning the QR code. Parents pick-up children from Worship and Wonder following the conclusion of worship.

**New members are received by the Session.** If you are seeking a church home, we invite you to join the Idlewild family. Connect with a Pastor after worship.

**Prayer requests** are prayed daily by the Community Prayer Ministry Team and the Confidential Prayer Partners. If your prayers are confidential, you may call (901-487-6062) or submit them by email to [confidentialprayers@idlewildchurch.org](mailto:confidentialprayers@idlewildchurch.org). Otherwise, you can fill out a Community Prayer Request card in the pew rack and place it in the offering plate or submit them by email to [communityprayer@idlewildchurch.org](mailto:communityprayer@idlewildchurch.org).

**If you have a hospitalization, or pastoral care need,** please call or text (901) 654-6872. The Pastor on Call will respond as soon as possible. You can also email [pastor@idlewildchurch.org](mailto:pastor@idlewildchurch.org).

## WORSHIP NOTICES

**We welcome our guest musicians this morning!** Shelby King is conductor, Noah Livingston is flutist and Eva McPeters is our guest organist.

**The sanctuary flowers** are given to the glory of God, and in loving memory of Richard Micheletti, by his family.

**Sanctuary flowers** are given in honor, celebration, or in appreciation of those we love. We appreciate your generosity in providing flowers to adorn our sanctuary for Sunday services. If you are interested in donating, find the registration page at [idlewildchurch.org/flower-dedication](http://idlewildchurch.org/flower-dedication).

**The 10:00 service** is live at [youtube.com/@idlewild.church/streams](https://youtube.com/@idlewild.church/streams). As always, worship is available by way of the radio on AM560, 96.1FM, or 98.5FM. **Music is printed** under Onelicense.net **A-702280**.



# Longing for Light, We Wait in Darkness 314

## Christ, Be Our Light

Em Am7 Bm7 Esus Em

1 Long-ing for light, we wait in dark-ness. Long-ing for  
 2 Long-ing for peace, our world is trou-bled. Long-ing for  
 3 Long-ing for food, man - y are hun - gry. Long-ing for  
 4 Long-ing for shel - ter, man - y are home-less. Long-ing for  
 5 Man - y the gifts, man - y the peo - ple, man - y the

Am7 Bm7 Esus Em Am7

truth, we turn to you. Make us your own,  
 hope, man - y de - spair. Your word a - lone  
 wa - ter, man - y still thirst. Make us your bread,  
 warmth, man - y are cold. Make us your build - ing,  
 hearts that yearn to be - long. Let us be ser - vants

D G C Am Dsus D

your ho - ly peo - ple, light for the world to see.  
 has power to save us. Make us your liv - ing voice.  
 bro - ken for oth - ers, shared un - til all are fed.  
 shel - ter - ing oth - ers, walls made of liv - ing stone.  
 to one an - oth - er, mak - ing your king - dom come.

*Refrain* G C G Em Bm Em

Christ, be our light! Shine in our hearts. Shine through the

Am7 D G Dsus D Em Em7

dark - ness. Christ, be our light! Shine in your

C Am7 D G Am7 G

church gath - ered to - day.

By blending biblical images and current vignettes in the present tense, this hymn connects Christ's promise that he is the Light of the world (John 8:12, 9:5) and his charge to his followers to be the light of the world (Matthew 5:14). This is part of the church's servant calling.



# ♦ *this week in print* ♦

## Adult Ministry

**Adult Forum** (Sunday, August 3 at 9 am in Montgomery Hall): Join us for an update from the Idlewild Standing Committee on Anti-Racism.

**The Art of Reading** (Tuesdays at 2 pm, Room 303): Jackie Stewart will continue to lead us through our discussion of *Absolution* by Alice McDermott.

**Summer Reading with Stephen's Class** (Sundays at 11:15 am, Room 303): We will be reading *The Overstory: A Novel*, written by Richard Powers. We'd love for you to join us for discussion and reflection.

## Outreach

**Room in the Inn** is a hospitality oriented ministry at Idlewild for our unsheltered neighbors. The Summer Season runs from May – September. Sign up to volunteer at the link below!

### Now Enrolling at the Early Enrichment Center!

The Early Enrichment Center (EEC) currently has limited openings for children ages 6 weeks to 2 years old. We provide a warm, nurturing environment where children grow through play-based, developmentally appropriate experiences.

Children engage in activities that promote social-emotional development and explore all key learning domains, including language and literacy, cognitive skills, motor development, creativity, and early STEM (science, technology, engineering, and math).

Our staff are informed about the impact of Adverse Childhood Experiences (ACEs) and are trained in TN-PACEs (Positive and Adverse Childhood Experiences). We are committed to creating a safe, responsive environment that supports every child's well-being and helps mitigate the negative effects of ACEs.

Come see what the EEC a supportive and enriching place to begin your child's learning journey! To learn more or schedule a tour, contact us at 901-725-7941.

## Fellowship and Recreation

**Fall Soccer Registration** is open! Register at [idlewildchurch.org/athletics](http://idlewildchurch.org/athletics). Fees include uniforms. Scholarships are available upon request.

**Ages 6-12:** \$90: Practices start the week of August 18, and games begin September 6.

**Ages 4-5:** \$60: First session is Saturday, September 6 at 9 am.

**Breakfast Potluck to Celebrate Reverend Courtney Veazey** (Sunday, August 10, 8:45 am): On Rev. Veazey's last Sunday, we will have a breakfast potluck to celebrate her and wish her farewell. Bring a breakfast food and join us in Montgomery Hall before worship!

**Open Mahjong Play:** Sign up using the link in the *This Week at Idlewild* Newsletter or at [idlewildchurch.org/fellowship-and-recreation](http://idlewildchurch.org/fellowship-and-recreation).

**Unite Memphis 5K & 1-Mile** (September 1, 9:30 am, National Civil Rights Museum): Celebrate 901 Day at the fourth annual Unite Memphis 5k and 1-mile! Whether you walk or run, we hope you'll join the Idlewild team as we unite to bring hope, healing, and unity to our city. Register and join the Idlewild team at the link below.

## Children & Youth Ministries

**Summer Sunday School** (9:00 - 9:45 am): Summer Sunday school is full of laid-back fun. Children ages 3 through 5th grade will gather in the Large Group Sunday School room (326). Middle & High schoolers can join the Adult Forums (Montgomery Hall) or help with Children's Sunday School.

**Last Youth Summer Meetup:** Sunday, July 27 | 3 - 5 pm | Snacks and Games | Youth Room (Jones Building)



Registrations, sign-ups, and other relevant links:  
[www.idlewildchurch.org/calendar](http://www.idlewildchurch.org/calendar).

# A Vision of Idlewild

Idlewild Presbyterian Church is a community in which ...

**J**esus Christ is the center;  
the mighty voice of God inspires us to love;  
the Spirit joyfully sustains and nurtures seekers of every age,  
stage, and circumstance.

**W**orship forms the core of community life;  
prayer binds our brokenness and connects us in Christ's love  
to God and to one another;  
music, poetry, and art flourish in gratitude to our Creator;  
the beauty of creation is treasured and preserved;  
all the members of the church are ministers.

**T**he focus is scripture and its meaning for today;  
faith is formed and spirits nourished through reflection,  
practice and shared learning;  
the wisdom of other faith traditions is respected;  
and a diverse membership enriches and unites us.

**J**ustice speaks loudly and peace is our aspiration;  
all voices are heard;  
recreation and play are a wellspring for fellowship,  
celebration, and growth;  
the love of God guides our minds and spirits,  
leading us to right action in our hearts, our homes,  
our community, our nation, and our world,

**A**nd all who enter find a home.



## MINISTERIAL AND PROGRAM STAFF

Ministers: All the members of Idlewild Presbyterian Church

For staff phone numbers and emails visit [www.idlewildchurch.org](http://www.idlewildchurch.org) or call the church.

**David J. Powers**

*Pastor and Head of Staff*

**Mary Newberg Gale**

*Associate Pastor for  
Adult Formation & Care*

**Courtney Veazey**

*Designated Associate Pastor for  
Outreach, Fellowship, and Recreation*

**Joshua H. Narcisse**

*Parish Associate*

**Gary Beard**

*Interim Director of Music Ministry*

**Stephen R. Haynes**

*Theologian in Residence*

**Anna Wheeler**

*Director of Summer Programming  
for Children & Youth*

**Corinne Nienhuis**

*Parish Associate Emeritus*

**Jacob Pierce**

*Director of Fellowship & Recreation*

**Shari Gross**

*Coordinator of Fellowship & Recreation*

**Jessica Demster**

*Director of Operations & Finance*

**Anna McCravery**

*Director of Communications*

**Amanda Kohr**

*Accounting & Generosity Coordinator*



IDLEWILD PRESBYTERIAN CHURCH (USA)  
[www.idlewildchurch.org](http://www.idlewildchurch.org) | 901-726-4681

