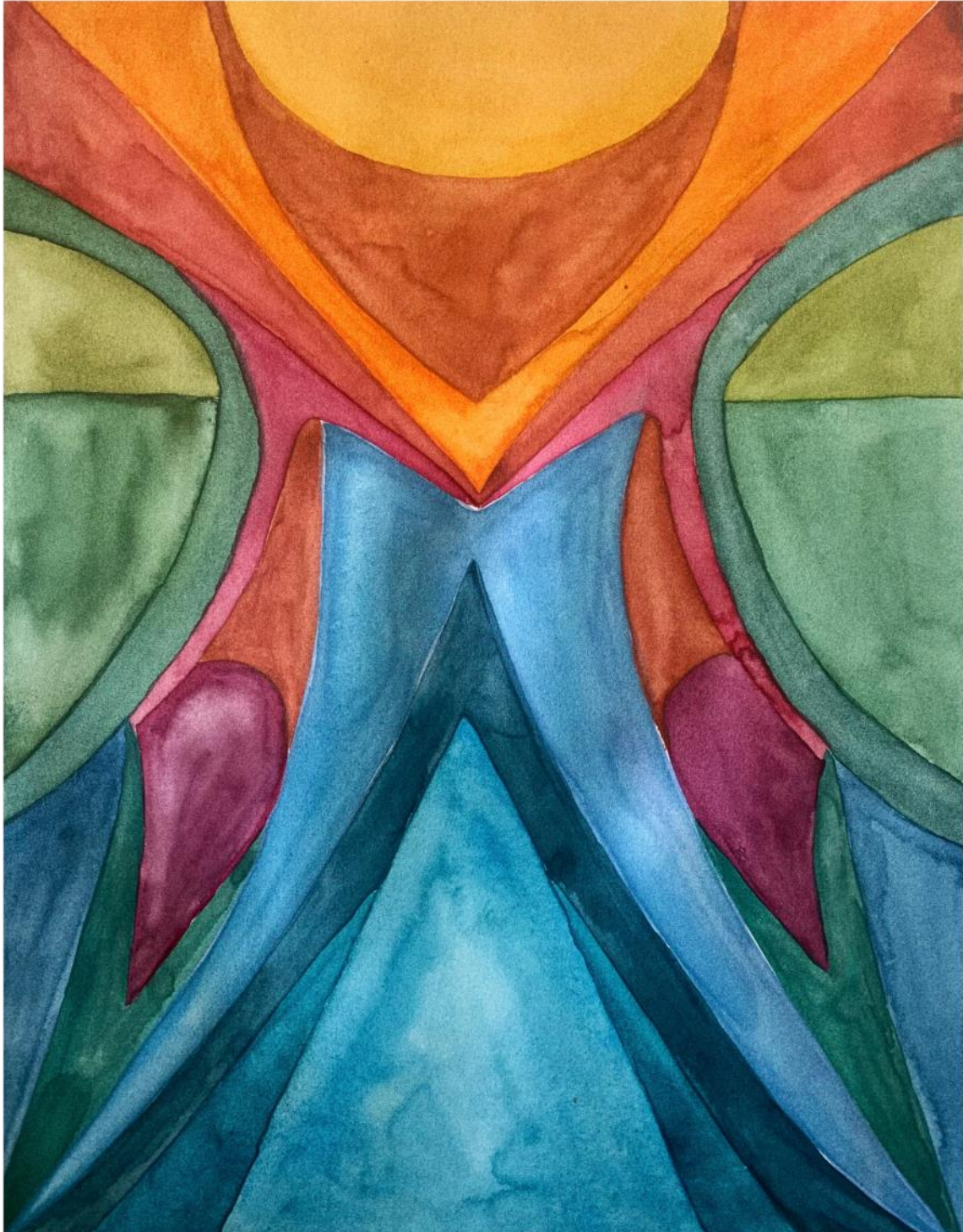


# SERVICE FOR THE LORD'S DAY

IDLEWILD PRESBYTERIAN CHURCH  
FIRST SUNDAY OF ADVENT  
NOVEMBER 27, 2022 | 11:00 A.M.



MINOR FIGURES, MAJOR FAITH – ZECHARIAH  
*The Unexpected Characters Who Welcomed Christ*

---

# GATHER IN GOD'S NAME

**Bold text is read**

**by the congregation.**

**\*Asterisk indicates when to rise in body or in spirit.**

**Please sign the friendship pad** so we may take note of your presence and you may greet your neighbors by name.

**The Words of Preparation this morning are from Richard Rohr (b. 1943).**

**The Call to Worship this morning is written by Stephen M. Fearing.**

## HANDBELL PEAL

## WELCOME

THE REVEREND DAVID J. POWERS

## WORDS OF PREPARATION

Silence is the necessary space around things that allows them to develop and flourish without my pushing.

## PRELUDE

“IMPROVISATION ON ST. GEORGE’S WINDSOR”

TANNER GOUGH

## \*CALL TO WORSHIP

AJ NORTHUP

Lift up your hearts, people of God,  
for the Lord has looked favorably upon us  
and is sending us his beloved son.

**God is raising up for us a mighty savior  
in the house of David.**

God is showing the mercy promised to our ancestors,  
and has remembered the holy covenant,  
the oath he swore to our ancestors Abraham and Sarah,  
that we might serve the Lord without fear.

**We go before the Lord, following John the Baptist,  
to prepare the way of the Lord.**

Come, let us worship God,  
and listen to the voice crying out in the wilderness.

**Hymn No. 82:** its opening "Come," this hymn sounds the note of entreaty and invitation that characterizes the Advent season (from the Latin *adventus* = "coming"). Its blending of memory and hope helps us to give voice to our present faith as we stand between the past and the future.

## \*HYMN OF CELEBRATION No. 82

HYFRYDOL

### "COME, THOU LONG-EXPECTED JESUS"

1 Come, thou long - ex - spect-ed Je - sus, born to set thy peo-ple free;  
2 Born thy peo - ple to de - liv - er, born a child and yet a king,

from our fears and sins re - lease us; let us find our rest in thee.  
born to reign in us for - ev - er, now thy gra-cious king-dom bring.

Is-rael's strength and con-so - la - tion, hope of all the earth thou art;  
By thine own e - ter - nal Spir - it rule in all our hearts a - lone;

dear de - sire of ev - ery na - tion, joy of ev - ery long-ing heart.  
by thine all - suf-fi - cient mer - it raise us to thy glo-rious throne.

*In the presence of a holy God, we become aware of the ways we fall short of God's best hopes for us, and the ways we have hurt others. We turn to God in prayer, asking for forgiveness.*

*We sing in thanksgiving for the gifts of forgiveness and new life.*

*Passing of the Peace is one of the most ancient responses in worship. We invite you to share a sign of peace with your neighbor.*

*As children come forward during the gathering hymn, you are invited to pass your quarters to the center aisle for the children to collect for their offering. Quarters are sent to the Dougbe Presbyterian River School in Liberia.*

## LIGHTING OF THE ADVENT CANDLE — HOPE

CHAD BRADDOCK & AJ NORTHROP

### \*PRAYER OF CONFESSION

THE REVEREND JOSHUA H. NARCISSE

God of righteousness and mercy,  
we confess we are so deeply engrossed in the cares of this world  
that we grow forgetful of eternal things.  
We are often tired, frustrated, and discouraged,  
seeking fulfillment in ways that are not your ways.  
We repent of all that displeases you and we forsake our former ways.  
Help us relinquish fruitless habits  
and receive a fresh outpouring of your Holy Spirit.  
Clothe us in Christ, we pray, for your glory!

*(Silent Reflection)*

### \*ASSURANCE OF PARDON

### \*CONGREGATIONAL RESPONSE

HOUSTON

REFRAIN Donald Pearson

*(handbells)* O come, O come, Em - man - u - el, and  
ran - som cap - tive Is - ra - el. Re - joice! Re - joice, Em -  
man - u - el shall come to thee, — O Is - ra - el.

### \*PASSING OF THE PEACE

KATE WOLFKILL

The peace of Christ be with you.  
And also with you!

### HYMN OF GATHERING

Je - sus, Je - sus, Je - sus in the mor - ning,  
Prai - se God, Prai - se God, Praise God in the mor - ning,  
4 Je - sus at the noon - time. Je - sus, Je - sus,  
Praise God at the noon - time. Prai - se God, Prai - se God,  
7 Je - sus when the sun goes down.  
Praise God when the sun goes down.

THE LORD'S PRAYER

*Before we can know God, God knows us. Baptism is one of the two sacraments of the Presbyterian Church (USA) in response to the grace of God, who calls us to be the people of God. We welcome children and adults into the fellowship of faith. The congregation promises to guide, nurture, and love the baptized person.*

*At this time, three to kindergarteners are welcome to proceed to the hallway with an adult and sign into Worship and Wonder.*

*The sermon is a reflection on the day's scriptures, suggesting implications for our faith and life.*

*The Affirmation of Faith is from Patmos Abbey, Order of St. Columba, in Australia.*

THE SACRAMENT OF BAPTISM

WALTER MICHAEL STROUP  
*Son of Laura & Robert Stroup*

BAPTISMAL HYMN

Child of blessing, child of promise, Baptized with the Spirit's sign, With this water God has sealed you Unto love and grace divine.	Child of God, your loving Parent, Learn to listen for God's call. Grow to laugh and sing and worship, Trust and love God more than all.
---	--

PROCLAIM GOD'S WORD

PRAYER OF ILLUMINATION

MARSHALL LAWRENCE

GOSPEL LESSON

LUKE 1:8-22

REV. POWERS

SERMON

"MINOR FIGURES, MAJOR FAITH – ZECHARIAH"

SILENT REFLECTION

RESPOND TO GOD'S WORD

\*AFFIRMATION OF FAITH

REV. NARCISSE

We believe that our lives are held within the encircling love of God,  
who knows our names and recognizes our deepest needs.

**We believe that Christ is the divine Child of the living God,  
and that his grace is like living waters that can never be exhausted.**

We believe in the birthing, renewing, enabling Spirit of God  
who yearns over our welfare as a mother yearns for her child.

**We believe that God is in the  
arid desert as well as in green pastures,  
and that hard times and disciplines are also loving gifts.**

We believe that our journey has a purpose and a destination,  
and that our path leads to a glory we cannot yet imagine.

**We believe that in the church we are fellow pilgrims on the road,  
and that we are called to love one another as God loves us.  
This is our faith and we are humbled to profess it in Jesus the  
Christ. Amen.**



*During this time, we invite you to continue your support of the church and her mission. Online giving is available through Realm or through the mail. Those in the sanctuary may place their offering in the plate as it is passed.*

*Doxology literally means "words of glory." Doxologies have long been used by Jews and Christians to praise God. We honor and thank God "from whom all blessings flow."*

## RECEPTION OF NEW MEMBERS

REV. POWERS

Cheryl & Larry Cole  
Colby Downs  
Larry McMillan  
Kerrye & Josh Threlkeld

## OFFERING OUR GIFTS & TITHES

REV. NARCISSE

## OFFERTORY

"THE APPLE TREE"

K. LEE SCOTT

Charles Dove, Baritone Soloist

*The tree of life my soul hath seen, laden with fruit and always green: the trees of nature fruitless be compared with Christ, the apple tree. His beauty doth all things excel: by faith I know, but ne'er can tell the glory which I now can see in Jesus Christ, the apple tree. For happiness I long have sought, and pleasure dearly I have bought: I missed of all; but now I see 'tis found in Christ, the apple tree. I'm weary with my former toil, here I will sit and rest awhile: under the shadow I will be, of Jesus Christ, the apple tree. Thi fruit doth make my soul to thrive, it keeps my dying faith alive; which makes my soul in haste to be with Jesus Christ, the apple tree.*

## \*DOXOLOGY

LASST UNS ERFREUEN

**Praise God, from whom all blessings flow;**

**Praise Christ, all creatures here below.**

**Alleluia! Alleluia!**

**Praise Holy Spirit evermore;**

**Praise Triune God whom we adore**

**Alleluia! Alleluia! Alleluia! Alleluia! Alleluia!**

## \*PRAYER OF DEDICATION

REV. POWERS



**Hymn 263:** This 18th-century text celebrating the sovereignty of Christ has been through several expansions and contractions before reaching its present form. It is set here to the oldest American hymn tune in continuous use since first published in 1793, which was written for it.

**\*HYMN OF SENDING NO. 100**

STAR OF COUNTY DOWN

“MY SOUL CRIES OUT WITH A JOYFUL SHOUT”



1 My soul cries out with a joy - ful shout that the  
 2 Though I am small, my God, my all, you  
 3 From the halls of power to the for - tress tower, not a  
 4 Though the na - tions rage from age to age, we re -



God of my heart is great, and my spir - it sings of the  
 work great things in me, and your mer - cy will last from the  
 stone will be left on stone. Let the king be - ware for your  
 mem - ber who holds us fast: God's mer - cy must de -



won - drous things that you bring to the ones who wait.  
 depths of the past to the end of the age to be.  
 jus - tice tears ev - ery ty - rant from his throne.  
 liv - er us from the con - quer - or's crush - ing grasp.



You fixed your sight on your ser - vant's plight, and my  
 Your ver - y name puts the proud to shame, and to  
 The hun - gry poor shall weep no more, for the  
 This sav - ing word that our fore - bears heard is the



weak - ness you did not spurn, so from east to west shall my  
 those who would for you yearn, you will show your might, put the  
 food they can nev - er earn; there are ta - bles spread; ev - ery  
 prom - ise which holds us bound, till the spear and rod can be



name be blest. Could the world be a - bout to turn?  
 strong to flight, for the world is a - bout to turn.  
 mouth be fed, for the world is a - bout to turn.  
 crushed by God, who is turn - ing the world a - round.



My heart shall sing of the day you bring. Let the



fires of your jus - tice burn. Wipe a - way all tears, for the



dawn draws near, and the world is a - bout to turn.



## CONGREGATIONAL MEETING

\*CHARGE & BENEDICTION

REV. POWERS

POSTLUDE

“REJOICE, YE PURE IN HEART”

DAVID CHERWIEN

## APNC Nominations

**Sue Crabtree** — Many know Sue as the long-time face of the Grace St. Luke's school office. Sue has been at Idlewild for many years. She is active at More than a Meal and has a real sense for nurturing our congregation.

**Daniel Edwards** — Daniel is an active member of the Adult Ministry Team, he has been integral to the Faith and Function Sunday school class. Daniel's son, Simon, is active in children's classes.

**Lindsey Gibbons** — Lindsey is newer to Idlewild and began attending while dating her now husband, Will Gibbons. She has been active in young adult groups, IdleWILD women, supper club, and working with the children's Sunday school classes.

**Barbara Key** — Barbara has been an active member of Christian Formation from Idlewild Book Club to Faith and Function to Holy Envy Book study. She has served on Budget and Finance. She is part of the Meals Team and faithfully serves the walk-up community at Food Bank.

**Bruce Moore** — Bruce, and his wife Beth, have raised four wonderful children at Idlewild so he has had the opportunity to observe and participate in all ages of Christian Formation. He also has served on the Congregational Care Committee. You can find Bruce faithfully sitting in the penalty box on Sundays.

---





### Artist Statement

This series is about the figures not included in our nativity set. These stories center on the family members, strangers, and spiritual gifts God brought together at the birth of Jesus. We begin the series with Zechariah's encounter with the angel, Gabriel. In this abstracted image, Zechariah is triangle, down on both knees. The colors are blue - quiet, soothing. Above is the angel reaching down below with blessed news. This news is like fire to Zechariah, amazing and frightening. The world around him, once blue, goes green with the news. John the Baptist will be born.

- Zoe Whelan

# Poinsettia Order Form

Orders must be received by December 11 for names to be in the December 18 bulletin. You can also order online.

Note: The price for poinsettias this year is \$11.

NAME \_\_\_\_\_

IN MEMORY/HONOR OF

PHONE \_\_\_\_\_

\_\_\_\_\_

E-MAIL \_\_\_\_\_

\_\_\_\_\_

Enclosed is my check for \$\_\_\_\_\_ (\$11 each). Designate flowers in memory or honor of, as circled below.

FROM \_\_\_\_\_

\_\_\_\_\_

\_\_\_\_\_

*Circle either Memory or Honor for each name.*

*Please attach additional sheet if needed.*

*Please print names carefully.*

IN MEMORY/HONOR OF

IN MEMORY/HONOR OF

\_\_\_\_\_

\_\_\_\_\_

\_\_\_\_\_

\_\_\_\_\_

FROM \_\_\_\_\_

FROM \_\_\_\_\_

\_\_\_\_\_

\_\_\_\_\_

\_\_\_\_\_

\_\_\_\_\_

IN MEMORY/HONOR OF

IN MEMORY/HONOR OF

\_\_\_\_\_

\_\_\_\_\_

\_\_\_\_\_

\_\_\_\_\_

FROM \_\_\_\_\_

FROM \_\_\_\_\_

\_\_\_\_\_

\_\_\_\_\_

\_\_\_\_\_

\_\_\_\_\_



Scan here to fill out the online flower form.

This is second option, you do not need to fill out both.



Use the QR code above  
to make your 2023 commitment through Realm.  
Or, fill out a commitment card located in the pews.

### WELCOME NOTICES

**Welcome to Idlewild!** We are glad to have you join us for worship. If you are new to Idlewild, it is our prayer that you will experience the presence of God while you are here. At Idlewild, it is our hope that all who enter find a home.

**Children are always welcome in worship.** In addition, childcare for children newborns—3 years is available in the Jones Building in Room 153. During the 11:00 service there is a special Time with the Younger Church, after which children ages 3 years—kindergarten may go to Worship and Wonder located in the Old Library on the second level. Parents pick up children from Worship and Wonder following the conclusion of worship. Children of all ages are invited to pick up a worship packet in the main hallway that can be utilized to enhance their worship experience.

**New members are received by the Session.** If you are seeking a church home, we invite you to join the Idlewild family. Please call (901)726-4681 during the week.

**Confidential prayer requests** are prayed daily by the Confidential Prayer Partners. To submit a request, you may call (901-487-6062) or submit by email to [confidentialprayers@idlewildchurch.org](mailto:confidentialprayers@idlewildchurch.org)

**If you have a personal emergency,** hospitalization, or pastoral care need, please call the church office at (901)726-4681. If it is after office hours or on the weekend, you may leave a confidential message (please press one to reach the voicemail box). Messages are checked regularly so that pastoral needs can be directed to the clergy.

### WORSHIP NOTICES

**The sanctuary flowers** are given today to the Glory of God in joyous anticipation of the coming of our Lord, by the flower committee.

**Sanctuary flowers** are given in honor, celebration, or in appreciation of those we love. We appreciate your generosity in providing flowers to adorn our sanctuary for Sunday services. If you are interested in donating, find the registration page at [www.idlewildchurch.org/registration](http://www.idlewildchurch.org/registration).

**The 11:00 service** is live at [livestream.com/idlewild](http://livestream.com/idlewild) (Livestream apps are available for Roku and mobile devices). As always, worship is available by way of the radio on AM560, 96.1FM, or 98.5FM **Music is printed** under Onelicense.net A-702280.

**This morning** we welcome guest organist, Tanner Gough.

# A Vision of Idlewild

Idlewild Presbyterian Church is a community in which ...

**J**esus Christ is the center;  
the mighty voice of God inspires us to love;  
the Spirit joyfully sustains and nurtures seekers of every age,  
stage, and circumstance.

**W**orship forms the core of community life;  
prayer binds our brokenness and connects us in Christ's love  
to God and to one another;  
music, poetry, and art flourish in gratitude to our Creator;  
the beauty of creation is treasured and preserved;  
all the members of the church are ministers.

**T**he focus is scripture and its meaning for today;  
faith is formed and spirits nourished through reflection,  
practice and shared learning;  
the wisdom of other faith traditions is respected;  
and a diverse membership enriches and unites us.

**J**ustice speaks loudly and peace is our aspiration;  
all voices are heard;  
recreation and play are a wellspring for fellowship,  
celebration, and growth;  
the love of God guides our minds and spirits,  
leading us to right action in our hearts, our homes,  
our community, our nation, and our world,

**A**nd all who enter find a home.



IDLEWILD PRESBYTERIAN CHURCH (USA)  
www.idlewildchurch.org | 901-726-4681



## MINISTERIAL AND PROGRAM STAFF

Ministers: All the members of Idlewild Presbyterian Church

For staff phone numbers and emails visit [www.idlewildchurch.org](http://www.idlewildchurch.org) or call the church.

David J. Powers  
*Pastor and Head of Staff*  
Courtney Veazey  
*Associate Pastor for  
Outreach & Nurture*  
Joshua Narcisse  
*Parish Associate*

Stephen R. Haynes  
*Theologian in Residence*  
Jeanene Mutchler  
*Director of Children & Youth Ministry*  
Corinne Nienhuis  
*Parish Associate Emeritus*

Jacob Pierce  
*Director of Nurture Ministry*  
Shari Gross  
*Coordinator of Nurture Ministry*  
Jessica Demster  
*Director of Operations & Finance*  
Zoe Whelan  
*Director of Communication*