

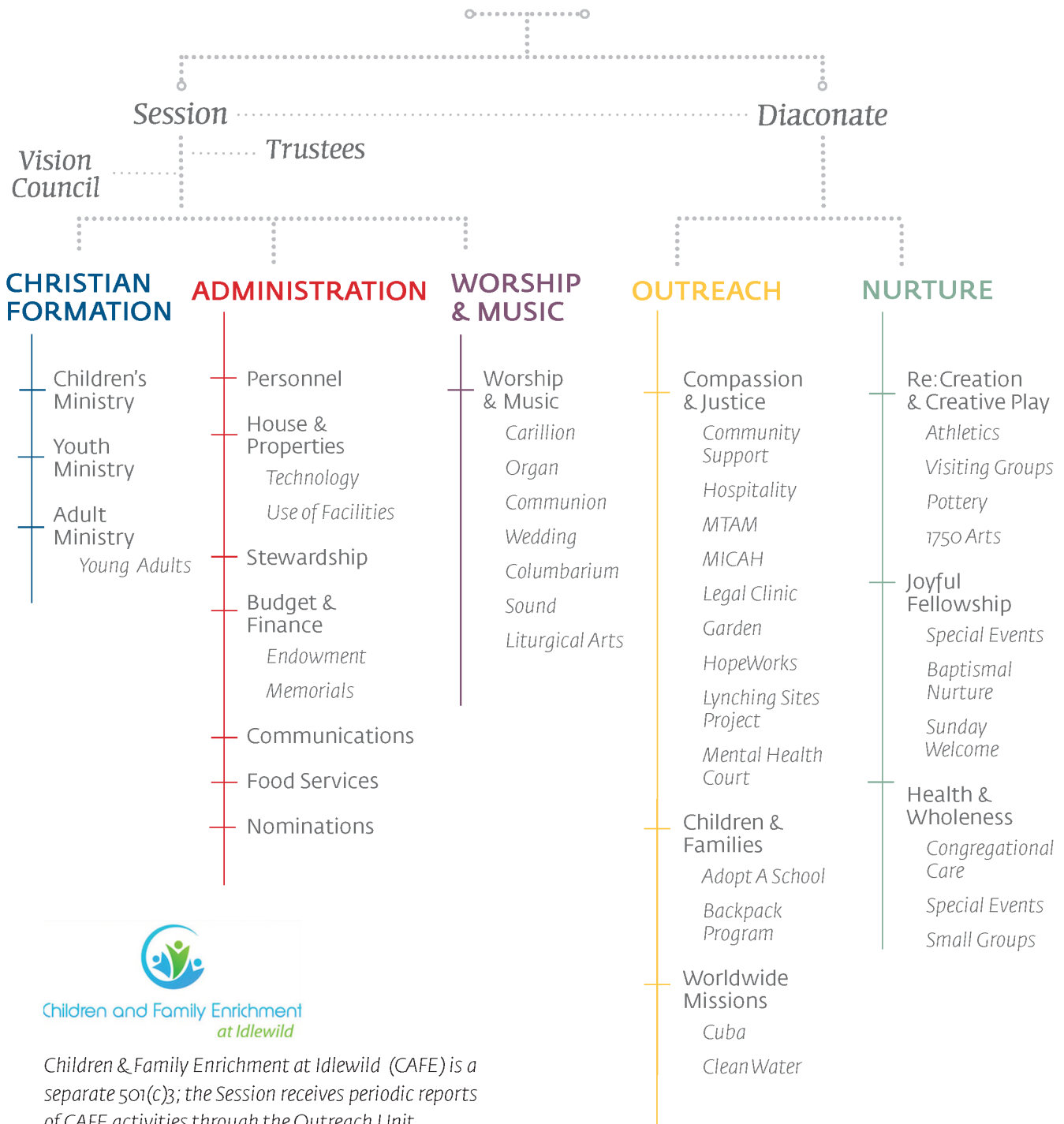


IDLEWILD PRESBYTERIAN CHURCH

SERVICE OPPORTUNITIES AUG-DEC 2021

Ministry at Idlewild is structured in five ministry units: Christian Formation, Worship & Music, Administration, Nurture, and Outreach. Please review the opportunities for service and discern where you feel God calling you. The ministry of Idlewild is not possible without the work of our members and friends. Help us serve as the hands and feet of Christ in Midtown Memphis and beyond.

Triune God



Children and Family Enrichment
at Idlewild

Children & Family Enrichment at Idlewild (CAFE) is a separate 501(c)3; the Session receives periodic reports of CAFE activities through the Outreach Unit

Christian Formation

CHILDREN'S MINISTRY

WORSHIP & WONDER HELPER

Lead and supervise children ages 3 to 5 during 11:00 service

When: Sunday Mornings 11:00 to 12:15

Frequency: As often as desired

Time commitment: 1.5 hours

NURSERY HELPER

Play with, care for, and cuddle the littlest ones during the 11:00 service

When: Sunday Mornings 10:30-12:15

Frequency: As often as desired

Time commitment: 1.5 hours

TEACH SUNDAY SCHOOL

Prepare and lead lessons from a curriculum

When: Sunday Mornings 9:40 to 10:40

Frequency: 2 times per month, depending on your schedule and the schedules of the other teacher(s)

Time commitment: 1 hour teaching, plus planning time August-May

SUNDAY SCHOOL SHEPHERD

Be an additional adult in Sunday school classrooms

When: Sunday Mornings 9:40 to 10:40

Frequency: Weekly or depending on your schedule

Time commitment: 1 hour August through May

OPPORTUNITIES FOR YOUTH VOLUNTEERS

- NURSERY HELPER
- WORSHIP & WONDER HELPER

OPPORTUNITIES FOR CHILDREN VOLUNTEERS

ASK BAPTISM QUESTIONS

Ask questions of the children during a baptism

When: Varies

Frequency: Once

Time commitment: 15 minutes

SERVE AS CHILD LITURGIST

Reading scripture, prayers and congregational instructions during 11 o'clock service

When: First Sunday of the month

Frequency: Once

Time commitment: One 11:00 service

YOUTH MINISTRY

TEACH YOUTH SUNDAY SCHOOL

Prepare and lead lessons from a curriculum

When: Sunday mornings during the school year

Frequency: Weekly

Time commitment: 1 hour teaching plus planning time

SERVE AS YOUTH ADVISOR

Supervise and lead activities for youth

When: Sunday evenings

Frequency: Weekly

Time commitment: 2 hours

YOUNG ADULT MINISTRY

PROVIDE A MEAL FOR UKIRK

Provide food for a weekly UKirk campus ministry group, and stay for fellowship if desired

When: Thursday evenings during the school year

Frequency: Once

Time commitment: 2 hours

HOST A THE YOUNG ADULT CHRISTMAS PARTY

Host the Christmas Party at your home for young adults

When: December 11 at 6 pm

Frequency: Once

Time commitment: 2 hours

ADULT MINISTRY

COORDINATE ADULT CLASS OR MIDWEEK GROUP

Help with planning and logistics for adults classes/groups

When: Varies

Frequency: Weekly

Time commitment: Varies

ADVENT DEVOTIONAL

Write a devotional for the Advent devotionals

When: October/November

Frequency: Once

Time commitment: 1 hour

HOST BIBLE STUDY

Host a group of 10 to 12 people in your home

When: Varies

Frequency: Weekly

Time commitment: 1 hour

SERVE ON A COMMITTEE

Serve on a Christian Formation Ministry Unit committee

When: Varies

Frequency: Monthly meeting

Time commitment: One year

PRESBYTERIAN WOMEN

CIRCLE CARE PARTNER

Write notes and check in on those women in need of attention

When: Varies

Frequency: Varies

Time Commitment: Varies

CHILD CARE PROVIDER

Help with childcare during PW events

When: Varies

Frequency: As often as desired

Time Commitment: 2 hours

BAPTISMAL BLANKETS

PW knit and crochet baptismal blankets for all babies baptized at Idlewild.

When: Ongoing

Frequency: As often as desired

Time Commitment: As needed

Administration

RUN BULLETINS

Print bulletins for worship using church copier (training provided)

When: Year-round

Frequency: Weekly

Time commitment: Thursday mornings, 10:00 to 11:30, and as needed for special services

REPLENISH PEW ENVELOPE RACKS

Restock pew envelope racks with pledge cards and offering envelopes

When: Year round

Frequency: As often as desired (you can volunteer as often as you would like)

Time commitment: 45 minutes to 1 hour

OFFICE VOLUNTEER

Work at the front office reception desk answering phones and greeting visitors (training provided)

When: As needed

Frequency: Varies

Time commitment: As needed

MAILING PREPARER

Help prepare bulk mailing (apply labels and seals)

When: As needed

Frequency: Varies

Time commitment: 2 hours

SUNDAY MORNING OFFICE VOLUNTEER

Staff the front office on Sunday mornings
(This is part of Sunday Morning Welcoming with the Nurture Unit.)

When: Sundays 9:30–10:30, 10:30–12:00
Frequency: Weekly as able
Time commitment: 1 hour

PRAY FOR IDLEWILD STAFF

Commit to weekly prayer specifically for an assigned staff member

When: Weekly
Frequency: Weekly
Time commitment: Varies

Worship

IDLEWILD CHOIR

Serve as a leader in worship; previous choral experience helpful but not necessary

When: August-May
Frequency: Weekly
Time commitment: Rehearsals 7:00-9:00 p.m.

Wednesdays; participation in 11:00 worship service; special rehearsals as needed

HANDBELL CHOIR

Serve as a leader in worship playing handbells

When: Year-round
Frequency: Weekly
Time commitment: Rehearsals on Sunday mornings; participation in 11:00 worship service

HANGING OF THE GREENS

Help decorate the church for Advent

When: Monday, November 22
Frequency: Once
Time commitment: 9:00 a.m. to 12:00 p.m.

SUNDAY USHER

Distribute bulletins, collect offering, ensure a safe worship space for everyone. (This is part of Sunday Morning Welcoming with the Nurture Unit.)

When: Sunday mornings, 10:30 to 12:15
Frequency: Weekly (you can serve as often as desired)
Time commitment: 1.5 hours

Nurture

RE:CREATION & CREATIVE PLAY

1750 ARTS COMMITTEE

Serve on arts committee and help plan direction of ministry

When: Meet quarterly
Frequency: As often as desired
Time commitment: Varies

COACH SOCCER OR BASKETBALL

Coach a team for school-age basketball or soccer league

When: Soccer: fall & spring; Basketball: late fall/winter
Frequency: Weekly practices and games
Time commitment: 1 hour practice and 1 hour for games weekly during sport season; 1 hour coaches meeting before season starts

COACH A MINI TEAM

Coach team for 4-5 year olds, basketball or soccer league

When: Soccer: fall & spring; Basketball: Late fall/winter
Frequency: Weekly clinic/games for 6 weeks per season
Time commitment: 1 hour weekly during sport season; 1 hour coaches meeting before season starts

BASKETBALL CONCESSIONS

Review menu and pricing and recruit workers

When: November-February
Frequency: 1-2 meeting before season and emails
Time commitment: Basketball season is 8 Saturdays, as often as desired

JOYFUL FELLOWSHIP & EVANGELISM

BAPTISM BUDDY

Serve as buddy for baptism family: pray for them and connect them to the greater church family

When: Varies

Frequency: Monthly contact/prayer

Time commitment: Varies

PICKUP AND DELIVER BAPTISM TREES

Pick up the trees from Ray & Louise Allen, then deliver the trees either to the baptism family or to the church near the date of the baptism

When: Varies based on when baptisms occur

Frequency: Monthly

Time commitment: Varies

TRUNK OR TREAT PLANNING

Assist with planning and execution of event on October 28; coordinate with GSL; communicate with members and neighbors

When: Fall

Frequency: Varies

Time commitment: 3–4 planning meetings plus emails

TRUNK OR TREAT EVENT VOLUNTEER

Volunteers needed for: set-up, security, games, welcome table, food station, and clean up

When: October 30

Frequency: Once

Time commitment: 3 hours

FALL POTLUCK

Help with set-up (10-12 people needed) and/or clean-up (10-12 people needed)

When: October 31

Frequency: Once

Time commitment: 2 hours

JOYFUL FELLOWSHIP COMMITTEE

Serve on this committee in the Nurture Ministry Unit

When: Second Monday of the month

Frequency: Monthly meeting

Time commitment: One year

CONGREGATIONAL CARE

MEALS MINISTRY

Prepare meals for members in times of need

When: Varies

Frequency: As often as desired

Time commitment: Varies

PRAYER SHAWLS

Knit prayer shawls that are given to members in times of need (pattern can be provided)

When: As you can

Frequency: As often as desired

Time commitment: Varies

TRANSPORTATION MINISTRY

Drive the bus on Sunday mornings to pick up congregants unable to transport themselves

When: Sunday mornings, 9:00 to 12:30

Frequency: As often as desired

Time commitment: Varies

GRIEF MINISTRY

Volunteer to write a note on the anniversary of a member or extended family member's death

When: Year-round

Frequency: Varies

Time commitment: Two meetings per year to assign notes plus note writing

CONGREGATIONAL CARE COMMITTEE

Serve on the committee and help plan direction of ministry

When: Fourth Thursday of the month

Frequency: Monthly meeting

Outreach

COMPASSION & JUSTICE

HOSPITALITY MINISTRY

Provide hospitality to individuals who come to church on Sunday mornings seeking assistance

When: Sundays

Frequency: Once per month

Time commitment: Either 8:15-10:30 or 10:30-12:30

MIDTOWN LEGAL CLINIC

Lawyers and laypeople assist in hosting a civil legal clinic twice a year

When: Saturday, November 6

Frequency: Once

Time commitment: 9:30 a.m. to 12:30 p.m.

HOPEWORKS FAITH ENCOURAGER

Meet with a prisoner at Shelby County Correctional Facility weekly as part of HopeWorks program. Training and background check needed.

When: Friday midday

Frequency: Weekly

Time commitment: 1 hour per week

ROOM IN THE INN

Set up, welcome, share a meal, and host homeless women

When: November–March at Calvary

May–September at Idlewild

Frequency: Monthly, 2nd Monday of the month through March; 2nd Tuesday beginning in April

Time commitment: Evening shift, overnight shift, morning shift

FRIENDS OF THE MENTAL HEALTH COURT

Ministry of presence accompanying persons going before the Mental Health Court process

When: Tuesday afternoons

Frequency: Weekly

Time commitment: 1–2 hours per week

MCMERTON GARDENS

Help in community gardens with planning, planting, maintenance, and mentoring youth

When: Saturday mornings, seasonally, and some Wednesdays

Frequency: Weekly

Time commitment: 10:00 to 12:00 noon

MICAH

(Memphis Interfaith Coalition for Action and Hope)

Be part of the Idlewild Core Team participating in MICAH training, monthly meetings, and task force work promoting equality and justice for a better Memphis for all.

When: Quarterly meetings with the MICAH Core Team, minimally. Participation in MICAH Board Meetings on 2nd Tuesdays (7:00–8:30 p.m.) and Issue Nights on 4th Mondays (6:30–8:30) are optional.

Frequency: Varies

Time commitment: Varies

NO LONGER STRANGERS

Show love and support for immigrant neighbors locally, nationally, and abroad through:

Cafe Justo coffee sales: help selling and accounting for coffee sales on the 2nd and 4th Sundays after worship

Good neighbor welcoming team: participate in the welcoming of families, which might include donations of furniture, assisting them in process functions such as getting the family to doctor appointments, or to the Social Security Administration for their Social Security Cards

Advocacy & Action team: opting into email updates from this ministry and reaching out to local, state, and federal legislators

Travel: Participate in travel to the US Mexico border with Frontero de Christo. A Mexico trip is not planned at this time, but hope to return to the border when COVID allows.

CHILDREN & FAMILIES

ADOPT-A-SCHOOL TUTOR

Tutor a child in kindergarten through fifth grade

When: August through May

Frequency: Weekly

Time commitment: 1 hour per week

ADOPT-A-SCHOOL READER

Read a book to a kindergarten class

When: August through May

Frequency: Weekly on Tuesdays (sign up as able)

Time commitment: 1 hour per week

MOBILE FOOD PANTRY

When: Wednesday mornings, rain or shine

Frequency: 2nd and 4th Wednesday s of the month

Time commitment:

Setup Shift: 6:30-8 am. Volunteers setup tables and materials, including sometimes repackaging food in smaller bags. May require some lifting

Distribution Shift: 7:30-10 am Volunteers place food items into the cars of guests coming to pick up food donated by the Mid-South Food Bank. May require some lifting.

CHILDREN & FAMILY ENRICHMENT

(CAFE) AT IDLEWILD

*These opportunities require a DHS background check.

CAREER DAY

Show and tell with the 3 and 4 year-old children.

Tell us about your job and how your career makes a difference in the community

When: Monday—Friday 9:30-10:30 a.m.

Frequency: Varies

Time commitment: 1 hour (30 minutes in each class)

READING CIRCLE

Join us for morning reading circle and read a book to the 2-year-old children

When: Monday—Friday 9:30-10:30 a.m.

Frequency: Varies

Time Commitment: 1 hour

GAME DAY

Help with fun day activities directing children on the playground, in the Activity Room, in the gym, or in the classroom—Soccer, Gymnastics, Splash Day

When: Monday—Friday 9 a.m.—12 p.m.

Frequency: Varies

Time Commitment: 3 hours (select a day and specific activity)

FRONT DESK

Support the EEC Team by greeting our Visitors, answering the phone, and doing clerical tasks

When: Monday – Friday, 9a – 6p

Frequency: As often as you are available

Time Commitment: 4-hour blocks (select a day)

CLASSROOM ASSISTANTS

Help us in the classrooms with curriculum activities, playtime, snack time and mealtime

When: Monday – Friday, 8:30a – 6pm

Frequency: As often as you are available

Time Commitment: 2 hours (select a day)

Idlewild Presbyterian Church (USA)

1750 Union | Memphis TN 38104 | www.idlewildchurch.org | 901-726-4681

